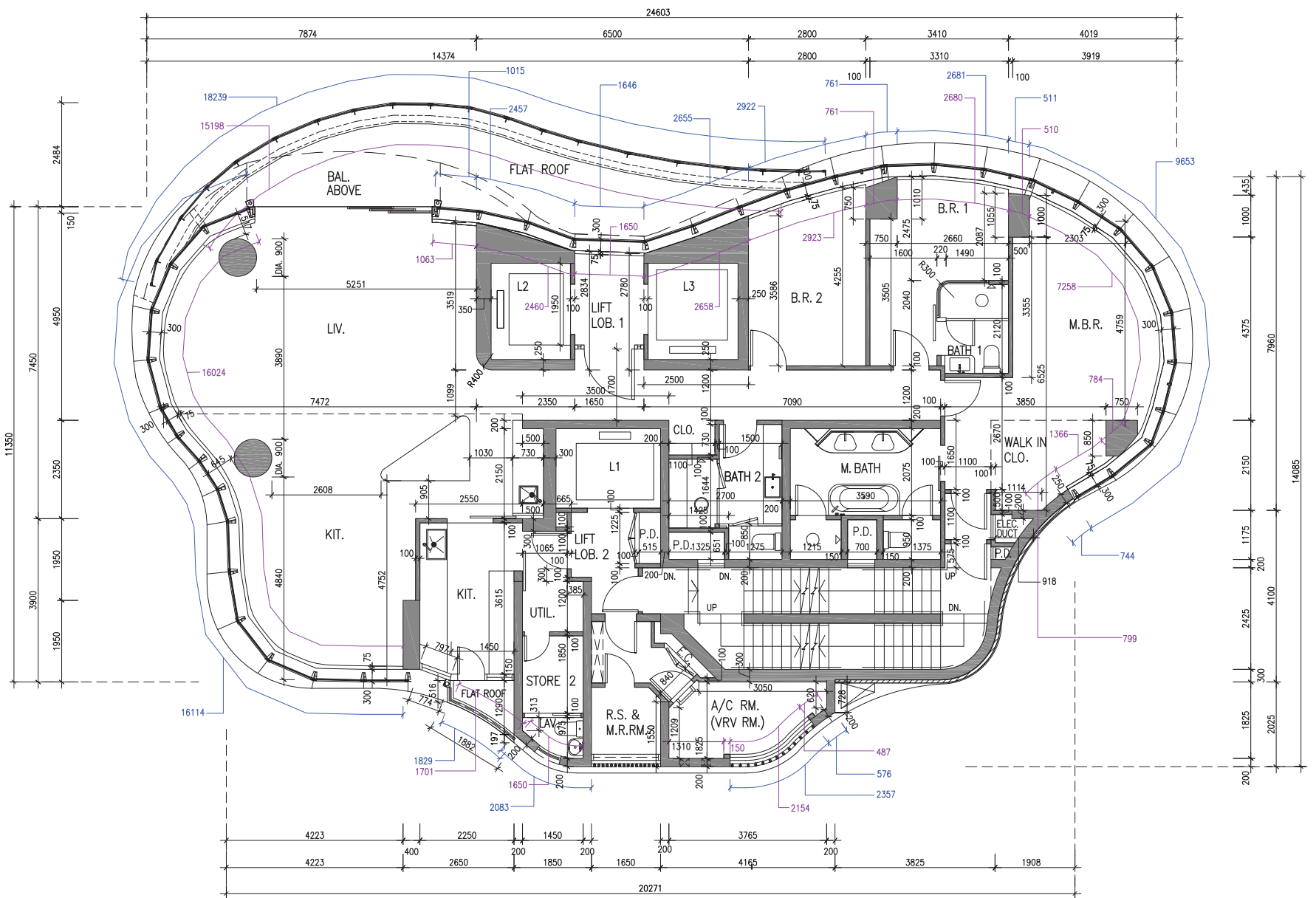


# FLOOR PLANS OF RESIDENTIAL PROPERTIES IN THE DEVELOPMENT

發展項目的住宅物業的樓面平面圖

## FLOOR PLAN OF 7/F

7樓平面圖



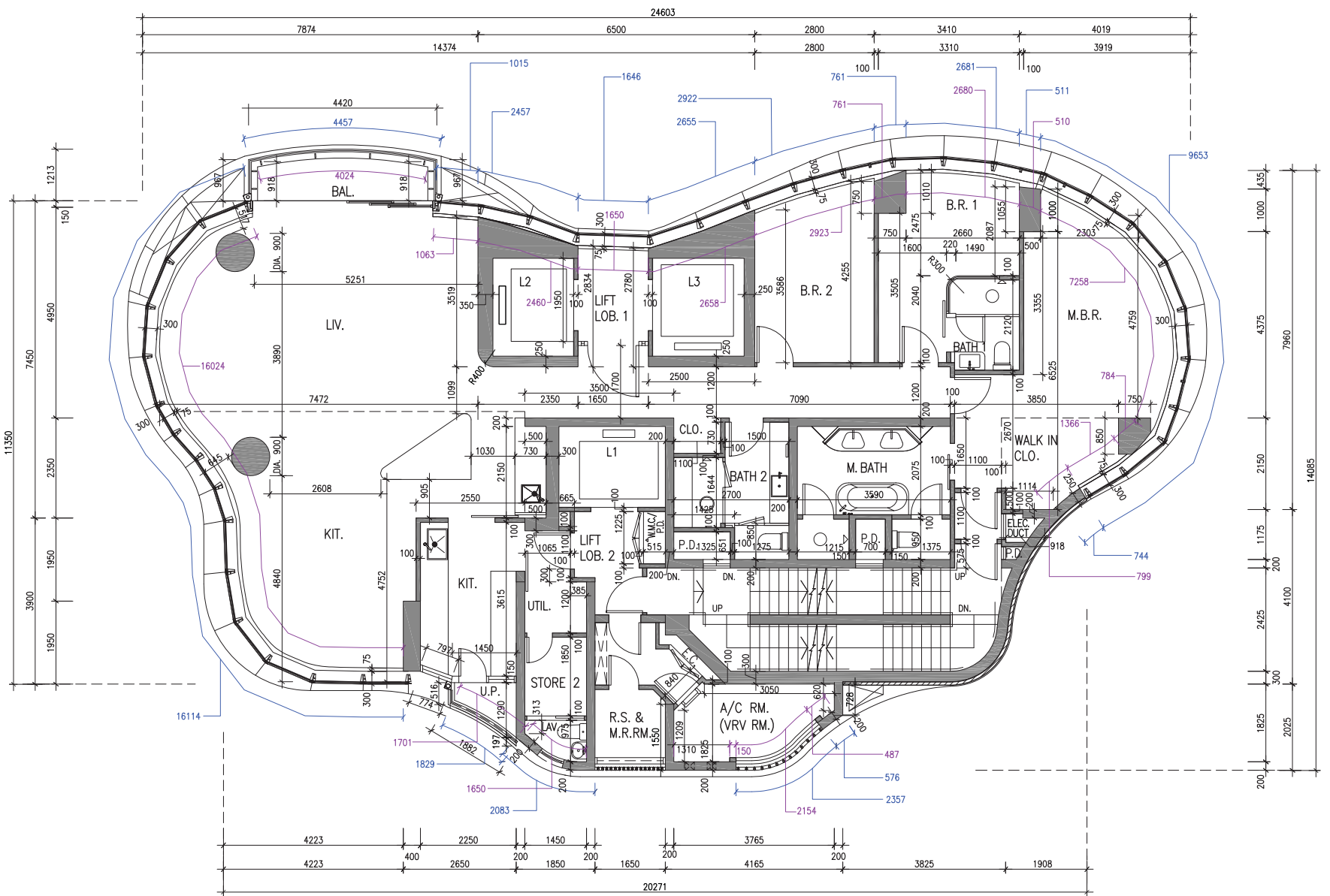
1. The thickness of the floor slabs (excluding plaster) of each residential unit is 150mm, 200mm, 250mm and 500mm.
2. Floor-to-floor height (refer to the height between the top surface of the structural slab of a floor and the top surface of the structural slab of its immediate upper floor) is 3.5m.
3. The internal areas of the residential properties on the upper floors will generally be slightly larger than those on the lower floors because of the reducing thickness of the structural walls on the upper floors.

1. 住宅單位之地台厚度(不包括批盪)為150毫米、200毫米、250毫米及500毫米。
2. 單位層與層之間的高度(指該樓層之石屎地台面與上一層石屎地台面之高度距離)為3.5米。
3. 因住宅物業的較高樓層的結構牆的厚度遞減,較高樓層的內部面積,一般比較低樓層之內部面積稍大。

A/C RM. (VRV RM.)	= Air-conditioning Room (Variable Refrigerant Volume Room) 空調機房
BAL. ABOVE	= Balcony Above 上層露台覆蓋之部分
BATH 1	= Bathroom 1 浴室 1
BATH 2	= Bathroom 2 浴室 2
B.R. 1	= Bedroom 1 睡房 1
B.R. 2	= Bedroom 2 睡房 2
CLO.	= Closet 衣帽間
E.C.	= Electrical Cabinet 電錶箱
ELEC. DUCT	= Electrical Duct 電纜管道槽
FLAT ROOF	= 平台
KIT.	= Kitchen 廚房
LAV.	= Lavatory 洗手間
L1	= Lift 1 升降機 1
L2	= Lift 2 升降機 2
L3	= Lift 3 升降機 3
LIFT LOB. 1	= Lift Lobby 1 升降機大堂 1
LIFT LOB. 2	= Lift Lobby 2 升降機大堂 2
LIV.	= Living Room 客廳
M.BATH	= Master Bathroom 主人房浴室
M.B.R.	= Master Bedroom 主人睡房
P.D.	= Pipe Duct 管道槽
R.S. & M.R.RM.	= Refuse Storage and Material Recovery Room 垃圾及物料回收房
STORE 2	= Store Room 2 儲物房 2
UTIL.	= Utility Room 多用途房
WALK IN CLO.	= Walk In Closet of Master Bedroom 主人睡房之衣帽間

# FLOOR PLANS OF RESIDENTIAL PROPERTIES IN THE DEVELOPMENT 發展項目的住宅物業的樓面平面圖

## FLOOR PLAN OF 8/F-13/F, 15/F-23/F, 25/F-33/F, 36/F-38/F 8樓至13樓，15樓至23樓，25樓至33樓，36樓至38樓平面圖



- |   |  |
|---|--|
| <p>1. The thickness of the floor slabs (excluding plaster) of each residential unit<br/>Units of 8/F-13/F, 15/F-23/F, 25/F-33/F, 36/F-37/F: 150mm, 200mm, 250mm and 500mm<br/>Unit of 38/F: 150mm, 175mm, 200mm and 550mm</p> <p>2. Floor-to-floor height (refer to the height between the top surface of the structural slab of a floor and the top surface of the structural slab of its immediate upper floor)<br/>Units of 8/F-13/F, 15/F-23/F, 25/F-33/F, 36/F-37/F: 3.5m<br/>Unit of 38/F: 3.85m</p> <p>3. The internal areas of the residential properties on the upper floors will generally be slightly larger than those on the lower floors because of the reducing thickness of the structural walls on the upper floors.</p> | <p>1. 住宅單位之地台厚度 (不包括批盪)<br/>8樓至13樓, 15樓至23樓, 25樓至33樓, 36樓至37樓單位: 150毫米、200毫米、250毫米及500毫米<br/>38樓單位: 150毫米、175毫米、200毫米及550毫米</p> <p>2. 單位層與層之間的高度 (指該樓層之石屎地台面與上一層石屎地台面之高度距離)<br/>8樓至13樓, 15樓至23樓, 25樓至33樓, 36樓至37樓單位: 3.5米<br/>38樓單位: 3.85米</p> <p>3. 因住宅物業的較高樓層的結構牆的厚度遞減, 較高樓層之內部面積, 一般比較低樓層之內部面積稍大。</p> |
|---|--|

A/C RM. (VRV RM.)	= Air-conditioning Room (Variable Refrigerant Volume Room) 空調機房
BAL. ABOVE	= Balcony Above 上層露台覆蓋之部分
BATH 1	= Bathroom 1 浴室 1
BATH 2	= Bathroom 2 浴室 2
B.R. 1	= Bedroom 1 睡房 1
B.R. 2	= Bedroom 2 睡房 2
CLO.	= Closet 衣帽間
E.C.	= Electrical Cabinet 電錶箱
ELEC. DUCT	= Electrical Duct 電纜管道槽
KIT.	= Kitchen 廚房
LAV.	= Lavatory 洗手間
L1	= Lift 1 升降機 1
L2	= Lift 2 升降機 2
L3	= Lift 3 升降機 3
LIFT LOB. 1	= Lift Lobby 1 升降機大堂 1
LIFT LOB. 2	= Lift Lobby 2 升降機大堂 2
LIV.	= Living Room 客廳
M.BATH	= Master Bathroom 主人房浴室
M.B.R.	= Master Bedroom 主人睡房
P.D.	= Pipe Duct 管道槽
R.S. & M.R.RM.	= Refuse Storage and Material Recovery Room 垃圾及物料回收房
STORE 2	= Store Room 2 儲物房 2
U.P.	= Utility Platform 工作平台
UTIL.	= Utility Room 多用途房
WALK IN CLO.	= Walk In Closet of Master Bedroom 主人睡房之衣帽間
W.M.C.	= Water Meter Cabinet 水錶箱

<sup>Δ</sup> Water Meter Cabinet at 8/F, 11/F, 15/F, 18/F, 21/F, 25/F, 28/F, 31/F & 38/F

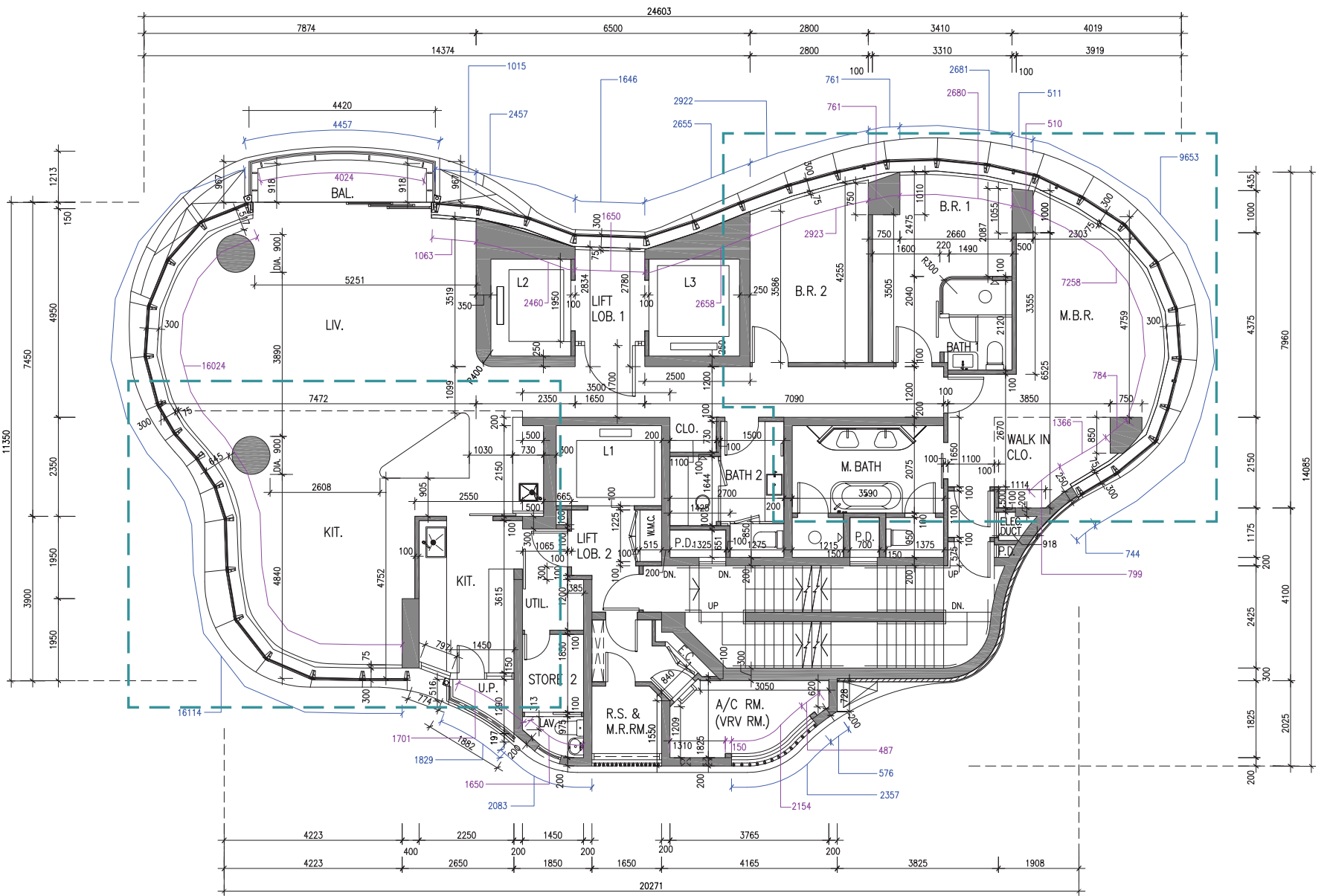
Associated Pipe Duct at 7/F, 9/F, 10/F, 12/F, 13/F, 16/F, 17/F, 19/F, 20/F, 22/F, 23/F, 26/F, 27/F, 29/F, 30/F, 32/F, 33/F, 36/F & 37/F

<sup>Δ</sup> 水錶箱位於 8樓, 11樓, 15樓, 18樓, 21樓, 25樓, 28樓, 31樓及38樓

有關管道槽位於 7樓, 9樓, 10樓, 12樓, 13樓, 16樓, 17樓, 19樓, 20樓, 22樓, 23樓, 26樓, 27樓, 29樓, 30樓, 32樓, 33樓, 36樓及37樓

FLOOR PLANS OF RESIDENTIAL PROPERTIES IN THE DEVELOPMENT  
發展項目的住宅物業的樓面平面圖

FLOOR PLAN OF 35/F  
35樓平面圖



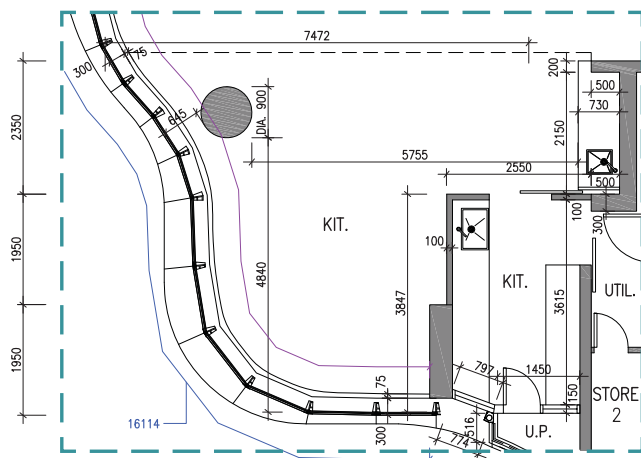
0      2      4      6M/米



1. The thickness of the floor slabs (excluding plaster) of this residential unit: 150mm, 200mm, 250mm and 500mm.
2. Floor-to-floor height (refer to the height between the top surface of the structural slab of a floor and the top surface of the structural slab of its immediate upper floor) is 3.5m.
3. The internal areas of the residential properties on the upper floors will generally be slightly larger than those on the lower floors because of the reducing thickness of the structural walls on the upper floors.

AS-BUILT PART PLANS OF UNIT OF 35/F

Note: These as-built part plans show the alternation works done to the Unit of 35/F. Please see below for details of the exempted and minor works made to this unit.



The Unit of 35/F has been altered by way of exempted and minor works under the Building Ordinance:

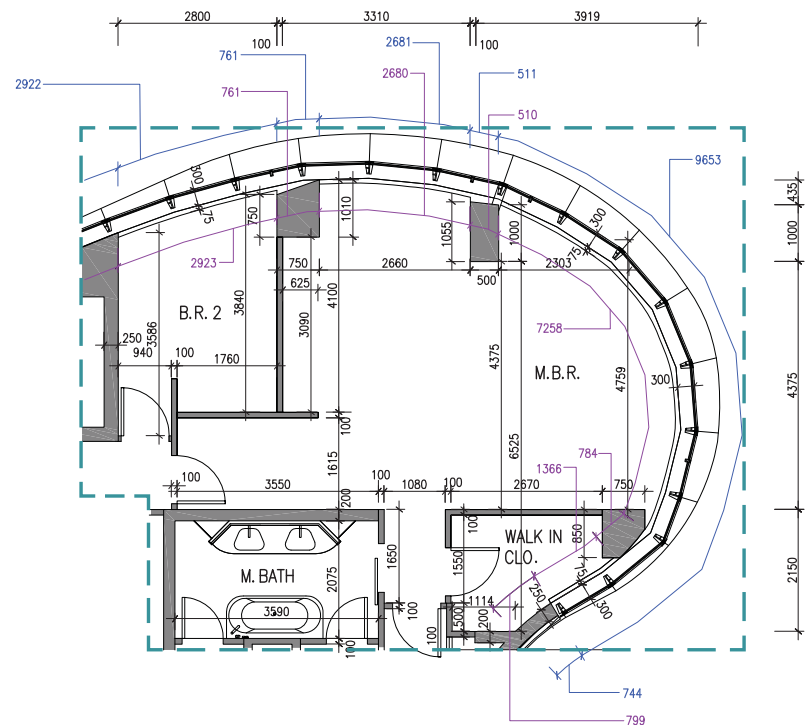
- a) The triangular island cabinet at Kitchen has been demolished and the door to Store Room 2 now opens outward. Please refer to "Fittings, Finishes and Appliances" for details.
- b) Bathroom 1 has been demolished. Master Bedroom and Bedroom 1 have been combined while Walk In Closet of Master Bedroom is now enclosed within a separate room with door. Minor adjustment has been made to the door and wall of Bedroom 2. Please refer to "Fittings, Finishes and Appliances" for details.
- c) Please refer to the as-built part plans above.

A/C RM. (VRV RM.)	= Air-conditioning Room (Variable Refrigerant Volume Room) 空調機房
BAL. ABOVE	= Balcony Above 上層露台覆蓋之部分
BATH 1	= Bathroom 1 浴室 1
BATH 2	= Bathroom 2 浴室 2
B.R. 1	= Bedroom 1 睡房 1
B.R. 2	= Bedroom 2 睡房 2
CLO.	= Closet 衣帽間
E.C.	= Electrical Cabinet 電錶箱
ELEC. DUCT	= Electrical Duct 電纜管道槽
KIT.	= Kitchen 廚房
LAV.	= Lavatory 洗手間
L1	= Lift 1 升降機 1
L2	= Lift 2 升降機 2
L3	= Lift 3 升降機 3
LIFT LOB. 1	= Lift Lobby 1 升降機大堂 1

1. 住宅單位之地台厚度 (不包括批盪) 為150毫米、200毫米、250毫米及500毫米。
2. 單位層與層之間的高度 (指該樓層之石屎地台面與上一層石屎地台面之高度距離) 為3.5米。
3. 因住宅物業的較高樓層的結構牆的厚度遞減, 較高樓層之內部面積, 一般比較低樓層之內部面積稍大。

35樓單位實際建造部份平面圖

附註: 以下實際建造部份平面圖顯示35樓單位的已改動工程。請參考下列有關本單位獲豁免的工程及小型工程改動之詳情。



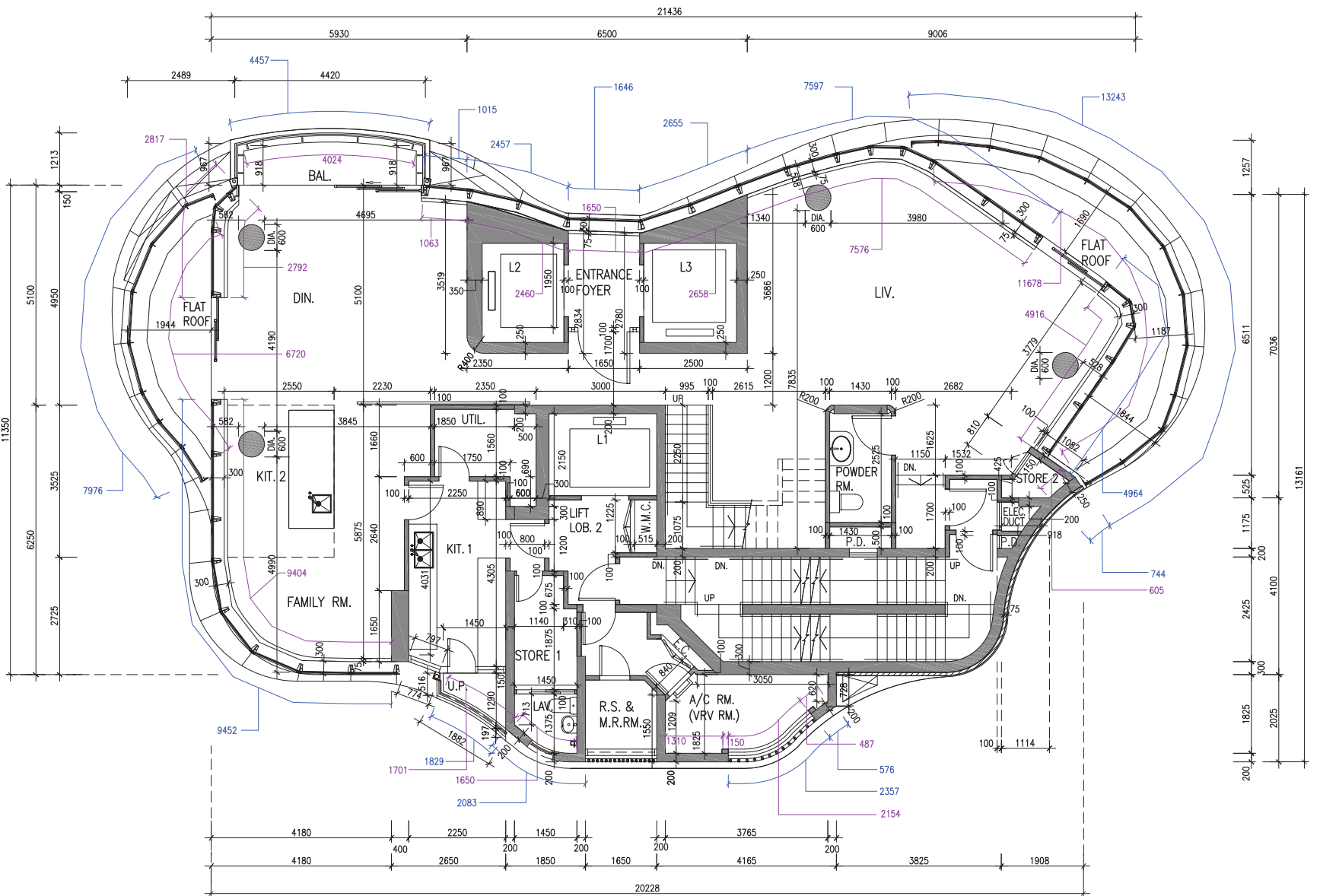
35樓單位已施行獲《建築物條例》豁免的工程及小型工程改動:

- a) 廚房的三角形廚櫃已被拆除, 儲物房2的門改為向外開。詳情請參閱「裝置、裝修物料及設備」。
- b) 浴室1已被拆除。主人睡房及睡房1已被連通, 主人睡房的開放式衣帽間被圍封成為房間。睡房2的門及牆身略作修改。詳情請參閱「裝置、裝修物料及設備」。
- c) 請參考以上實際建造部份平面圖。

LIFT LOB. 2	= Lift Lobby 2 升降機大堂 2
LIV.	= Living Room 客廳
M.BATH	= Master Bathroom 主人房浴室
M.B.R.	= Master Bedroom 主人睡房
P.D.	= Pipe Duct 管道槽
R.S. & M.R.RM.	= Refuse Storage and Material Recovery Room 垃圾及物料回收房
STORE 2	= Store Room 2 儲物房 2
U.P.	= Utility Platform 工作平台
UTIL.	= Utility Room 多用途房
WALK IN CLO.	= Walk In Closet of Master Bedroom 主人睡房之衣帽間
W.M.C.	= Water Meter Cabinet 水錶箱

# FLOOR PLANS OF RESIDENTIAL PROPERTIES IN THE DEVELOPMENT 發展項目的住宅物業的樓面平面圖

## FLOOR PLAN OF LOWER DUPLEX (39/F) 複式單位下層(39樓)平面圖



0 2 4 6M/米

1. The thickness of the floor slabs (excluding plaster) of this residential unit  
39/F (excluding void above): 150mm, 200mm and 500mm  
40/F: 150mm and 250mm
2. Floor-to-floor height (refer to the height between the top surface of the structural slab of a floor and the top surface of the structural slab of its immediate upper floor) is 3.5m.
3. The internal areas of the residential properties on the upper floors will generally be slightly larger than those on the lower floors because of the reducing thickness of the structural walls on the upper floors.

1. 住宅單位之地台厚度(不包括批盪)  
39樓(不包括上層中空部份): 150毫米、200毫米及500毫米  
40樓: 150毫米及250毫米
2. 單位層與層之間的高度(指該樓層之石屎地台面與上一層石屎地台面之高度距離)為3.5米。
3. 因住宅物業的較高樓層的結構牆的厚度遞減, 較高樓層的內部面積, 一般比較低樓層之內部面積稍大。

A/C RM. (VRV RM.)	= Air-conditioning Room (Variable Refrigerant Volume Room) 空調機房
BAL.	= Balcony 露台
DIN.	= Dining Room 飯廳
ENTRANCE FOYER	= 入口大堂
E.C.	= Electrical Cabinet 電錶箱
ELEC. DUCT	= Electrical Duct 電纜管道槽
FAMILY RM.	= Family Room 家庭廳
FLAT ROOF	= 平台
KIT. 1	= Kitchen 1 廚房 1
KIT. 2	= Kitchen 2 廚房 2
LAV.	= Lavatory 洗手間
L1	= Lift 1 升降機 1
L2	= Lift 2 升降機 2
L3	= Lift 3 升降機 3
LIFT LOB. 2	= Lift Lobby 2 升降機大堂 2
LIV.	= Living Room 客廳
POWDER RM.	= Powder Room 化妝間
P.D.	= Pipe Duct 管道槽
R.S. & M.R.RM.	= Refuse Storage and Material Recovery Room 垃圾及物料回收房
STORE 1	= Store Room 1 儲物房 1
STORE 2	= Store Room 2 儲物房 2
U.P.	= Utility Platform 工作平台
UTIL.	= Utility Room 多用途房
W.M.C.	= Water Meter Cabinet 水錶箱

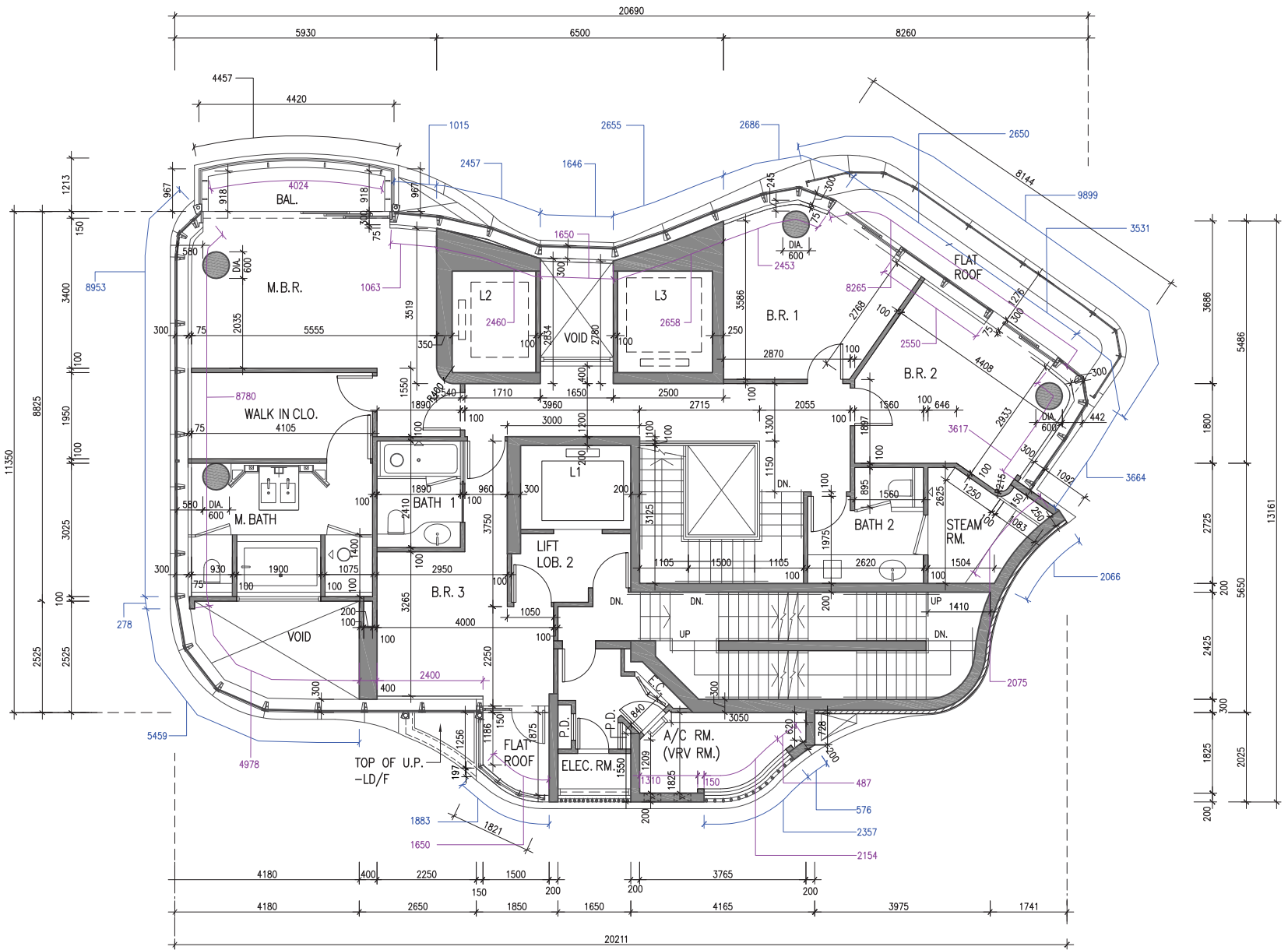


# FLOOR PLANS OF RESIDENTIAL PROPERTIES IN THE DEVELOPMENT

發展項目的住宅物業的樓面平面圖

## FLOOR PLAN OF UPPER DUPLEX (40/F)

複式單位上層(40樓)平面圖



0 2 4 6M/米



1. The thickness of the floor slabs (excluding plaster) of this residential unit is 150mm, 200mm and 500mm for 39/F (excluding void above); and 150mm and 250mm for 40/F.
2. Floor-to-floor height (refer to the height between the top surface of the structural slab of a floor and the top surface of the structural slab of its immediate upper floor) is 3.5m.
3. The internal areas of the residential properties on the upper floors will generally be slightly larger than those on the lower floors because of the reducing thickness of the structural walls on the upper floors.

1. 住宅單位之地台厚度(不包括批盪)  
39樓(不包括上層中空部份): 150毫米、200毫米及500毫米  
40樓: 150毫米及250毫米
2. 單位層與層之間的高度(指該樓層之石屎地台面與上一層石屎地台面之高度距離)為3.5米。
3. 因住宅物業的較高樓層的結構牆的厚度遞減, 較高樓層的內部面積, 一般比較低樓層之內部面積稍大。

A/C RM. (VRV RM.)	= Air-conditioning Room (Variable Refrigerant Volume Room) 空調機房
BAL.	= Balcony 露台
BATH 1	= Bathroom 1 浴室 1
BATH 2	= Bathroom 2 浴室 2
B.R. 1	= Bedroom 1 睡房 1
B.R. 2	= Bedroom 2 睡房 2
B.R. 3	= Bedroom 3 睡房 3
E.C.	= Electrical Cabinet 電錶箱
ELEC. RM	= Electrical Room 機電房
FLAT ROOF	= 平台
L1	= Lift 1 升降機 1
L2	= Lift 2 升降機 2
L3	= Lift 3 升降機 3
M. BATH	= Master Bathroom 主人房浴室
M.B.R.	= Master Bedroom 主人睡房
P.D.	= Pipe Duct 管道槽
STEAM RM.	= Steam Room 蒸氣房
TOP OF U.P.- LD/F	= Top of Utility Platform of Lower Duplex Floor 複式單位下層工作平台之覆蓋部分
WALK IN CLO.	= Walk In Closet of Master Bedroom 主人睡房之衣帽間
VOID	= 中空

## AREA OF RESIDENTIAL PROPERTIES IN THE DEVELOPMENT

### 發展項目中的住宅物業的面積

Description of Residential Property 物業的描述		Saleable Area (including balcony, utility platform and verandah, if any) sq metre (sq ft) 實用面積 (包括露台、工作平台及陽台(如有)) 平方米(平方呎)	Area of other specified items (Not included in the Saleable Area) 其他指明項目的面積 (不計算入實用面積) sq metre (sq ft) 平方米 (平方呎)									
Block Name 大廈名稱	Floor 樓層		Air-conditioning Plant Room 空調機房	Bay Window 窗台	Cockloft 閣樓	Flat Roof 平台	Garden 花園	Parking Space 停車位	Roof 天台	Stair-hood 梯屋	Terrace 前庭	Yard 庭院
ARGENTA 瑋然	7/F	196.183 (2,112)	5.522 (59)	--	--	28.203 (304)	--	--	--	--	--	--
	8/F-13/F, 15/F-23/F, 25/F-33/F, 35/F-38/F	202.678 (2,182) Balcony 露台: 4.999 (54) Utility Platform 工作平台: 1.496 (16)	5.522 (59)	--	--	--	--	--	--	--	--	--
	39/F & 40/F Duplex 複式單位	330.479 (3,557) Balcony 露台: 9.998 (108) Utility Platform 工作平台: 1.496 (16)	11.044 (119)	--	--	35.589 (383)	--	--	--	--	--	--

## Note:

The area in square metre have been converted to square foot based on a conversion rate of 1 square metre = 10.764 square feet and rounded off to the nearest integer.

## 附註:

以平方米列出的面積以1平方米=10.764平方呎換算至平方呎並四捨五入至整數。

1. The saleable area is calculated in accordance with Section 8 of the Residential Properties (First-hand Sales) Ordinance.
2. The floor areas of balcony, utility platform and verandah (if any) are calculated in accordance with Section 8 of the Residential Properties (First-hand Sales) Ordinance.
3. The areas of other specific items (not included in the saleable area) are calculated in accordance with Part 2 of Schedule 2 to the Residential Properties (First-hand Sales) Ordinance.

1. 實用面積是按《一手住宅物業銷售條例》第8條計算。
2. 露台、工作平台及陽台(如有)之樓面面積是按《一手住宅物業銷售條例》第8條計算。
3. 其他指明項目的面積(不包括在實用面積內)是按《一手住宅物業銷售條例》附表2第2部計算。